

Code No:R09220305

R09

SET-1

**B.Tech II Year - II Semester Examinations, April/May 2012**

**MACHINE DRAWING**

**(COMMON TO AME, ME, MCT)**

**Time: 3 hours**

**Max. Marks: 75**

**Note: Answer any TWO Questions from PART-A**

**PART-B is compulsory**

---

**PART-A**

**(15×2=30)**

1. Answer any two of the following, indicating the proportional dimensions on the Drawing.
  - a) Hook bolt.
  - b) Gib and cotter joint to connect square shafts of 35 mm side.
  - c) Double riveted double cover butt joint to connect plates of 20 mm thickness.
  - d) Draw half sectional front view with top half in section and the side view of a bushed pin type of flanged coupling, connecting two shafts of 50 mm diameter each.

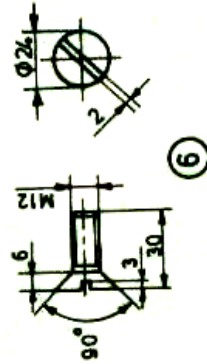
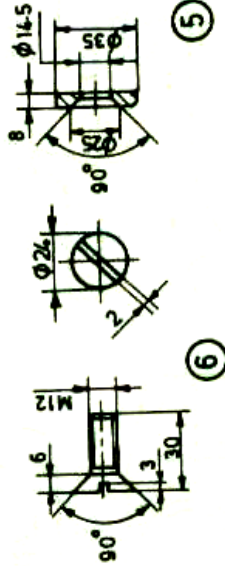
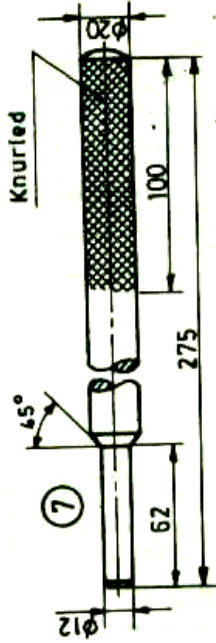
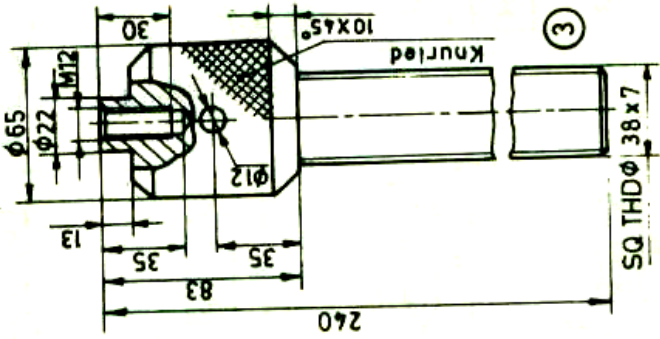
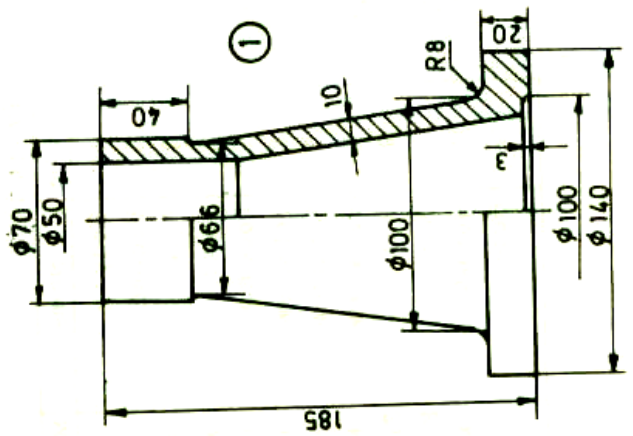
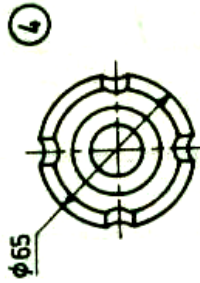
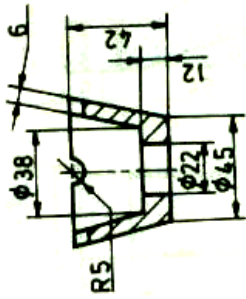
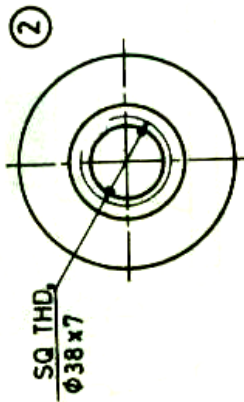
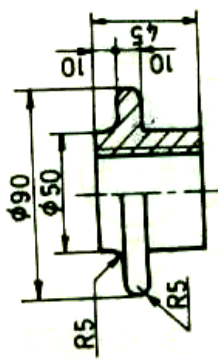
**PART-B**

**(45×1=45)**

2. Details of Screw Jack are given in figure:

Assemble all parts and draw

- a) Right half sectional front view
- b) Top view
- c) Left side view.



Part No.	Name	Matl	Qty
1	Body	CI	1
2	Nut	GM	1
3	Screw	MS	1
4	Cup	CS	1
5	Washer	MS	1
6	Screw	MS	1
7	Tommy bar	MS	1

\*\*\*\*

Code No:R09220305

R09

SET-2

**B.Tech II Year - II Semester Examinations, April/May 2012**

**MACHINE DRAWING**

**(COMMON TO AME, ME, MCT)**

**Time: 3 hours**

**Max. Marks: 75**

**Note: Answer any TWO Questions from PART-A**

**PART-B is compulsory**

---

**PART-A**

**(15×2=30)**

- 1 Answer any two of the following, indicating the proportional dimensions on the drawing
- a) Forms of screw threads.
  - d) Draw the sectional front view and top view of knuckle joint with sleeves to connect shafts of 35 mm.
  - e) Draw the sectional front view and top view of double riveted lap joint with zig-zag type to join two plates of 20 mm thickness each.
  - d) Draw half sectional front view with top half in section and the side view of a bushed pin type of flanged coupling, connecting two shafts of 25 mm diameter each.

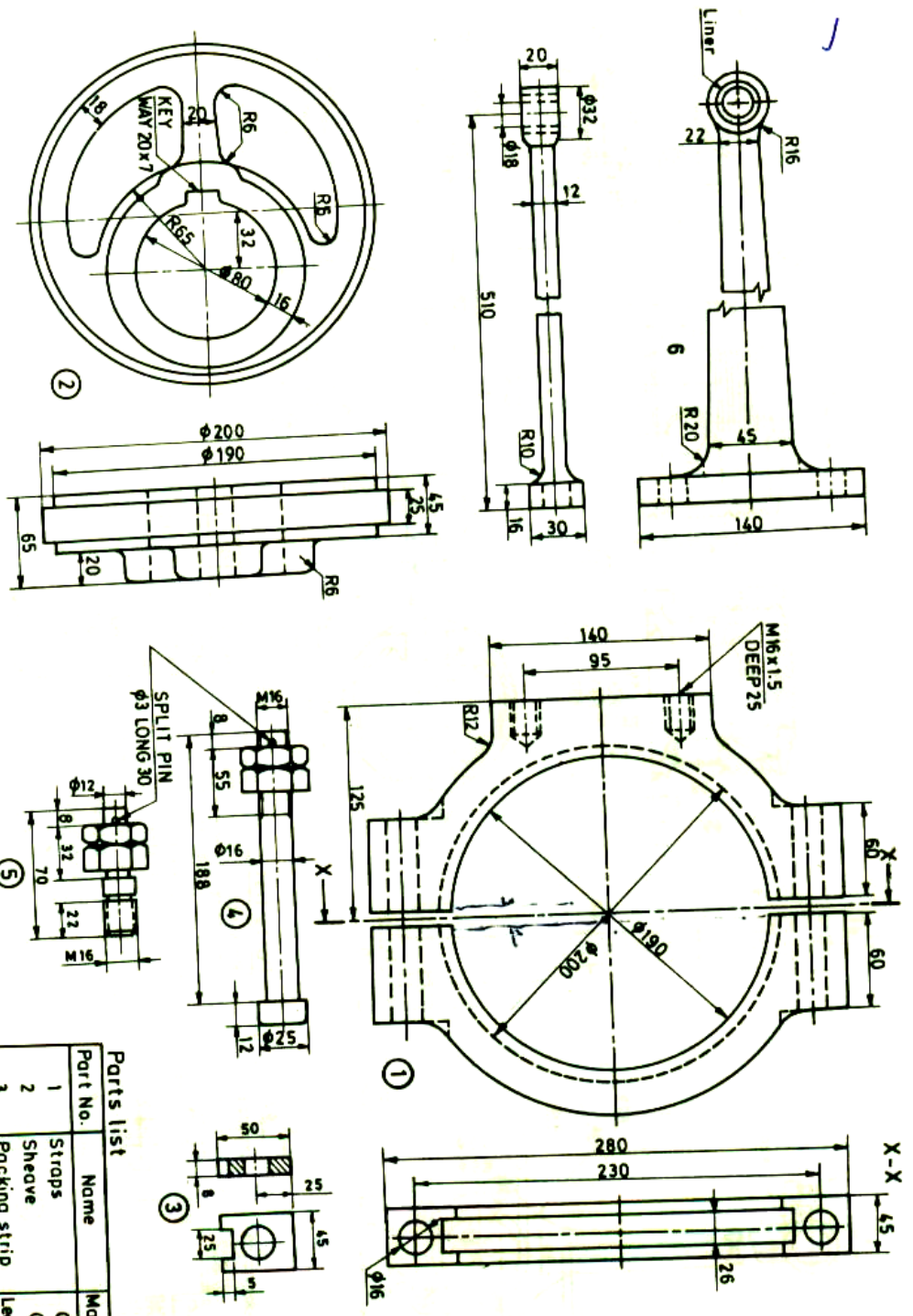
**PART-B**

**(45×1=45)**

2. Details of an eccentric are given in figure:

Assemble all parts and draw

- a) Front view top half in section.
- b) Top view
- c) Left side view.



**Parts list**

Part No.	Name	Matl	Qty
1	Straps	C I	2
2	Sheave	C I	1
3	Packing strip	Leather	2
4	Strap bolt	M S	2
5	Stud with nut	M S	2
6	Eccentric rod	Forged steel	1

\*\*\*\*\*

Code No:R09220305

R09

SET-3

**B.Tech II Year - II Semester Examinations, April/May 2012**

**MACHINE DRAWING**

**(COMMON TO AME, ME, MCT)**

**Time: 3 hours**

**Max. Marks: 75**

**Note: Answer any TWO Questions from PART-A**

**PART-B is compulsory**

---

**PART-A**

**(15×2=30)**

- 1 Answer any two of the following, indicating the proportional dimensions on the drawing.
- Draw the stud bolt.
  - Draw the sectional front view and top view of knuckle joint with sleeves to connect shafts of 35 mm.
  - Draw the sectional front view and top view of single riveted butt joint with double straps chain type to join two plates of 20 mm thickness each.
  - Draw half sectional front view and the top view of an universal coupling connecting two shafts of 25 mm diameter each.

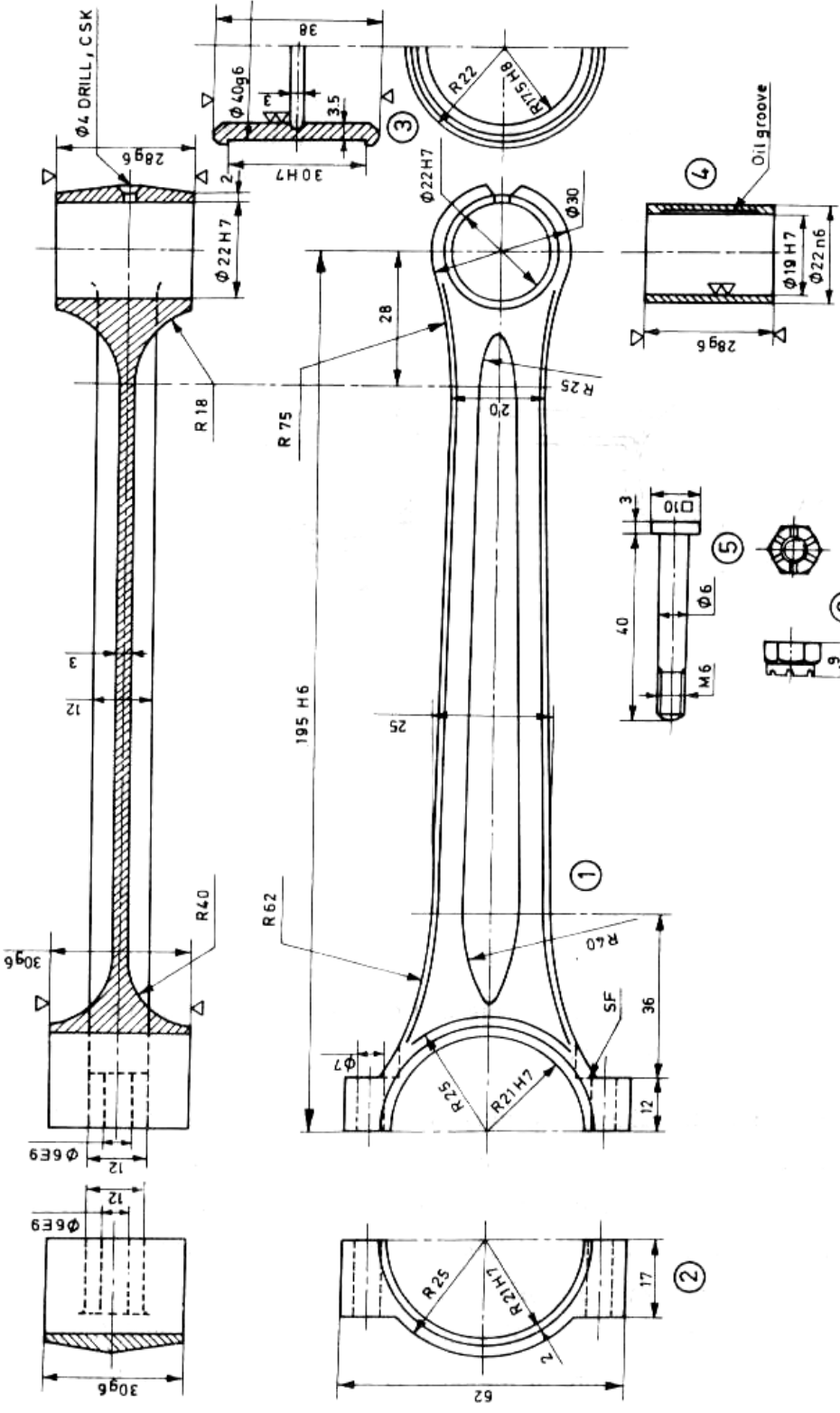
**PART-B**

**(45×1=45)**

2. Details of the petro engine connecting rod are shown in figure:

Assemble all parts and draw

- Front view.
- Sectional plan
- Right side view.



$195\ H6\ +0.029$	$40\ g6\ -0.060$	$22\ n6\ +0.028$	$19\ H7\ +0.021$	$30\ g6\ -0.070$	$6\ E9\ +0.05$
$42\ H7\ +0.025$	$28\ g6\ -0.070$	$19\ H7\ +0.021$	$30\ g6\ -0.070$	$6\ E9\ +0.05$	
$35\ H8\ +0.039$	$22\ H7\ +0.021$				

\*\*\*\*

Code No:R09220305

R09

SET-4

**B.Tech II Year - II Semester Examinations, April/May 2012**

**MACHINE DRAWING**

**(COMMON TO AME, ME, MCT)**

**Time: 3 hours**

**Max. Marks: 75**

**Note: Answer any TWO Questions from PART-A**

**PART-B is compulsory**

---

**PART-A**

**(15×2=30)**

- 1 Answer any two of the following, indicating the proportional dimensions on the drawing.
- Draw the tap bolt.
  - Draw the front view with top half in section and side view of a socket and spigot cotter joint to connect two shafts of 50 mm diameter each.
  - Draw the sectional front view and top view of double riveted butt joint with single strap Zig-zag type to join two plates of 10 mm thickness each.
  - Draw half sectional front view with top half in section and side view of a muff coupling connecting two shafts of 30 mm diameter each.

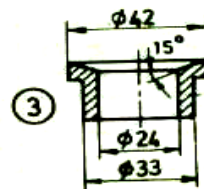
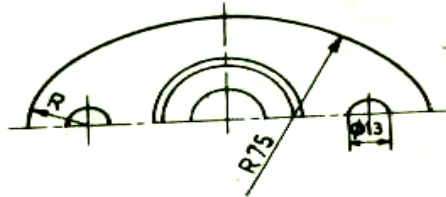
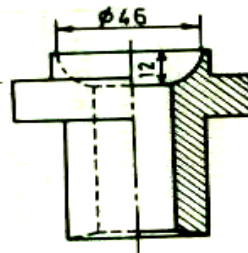
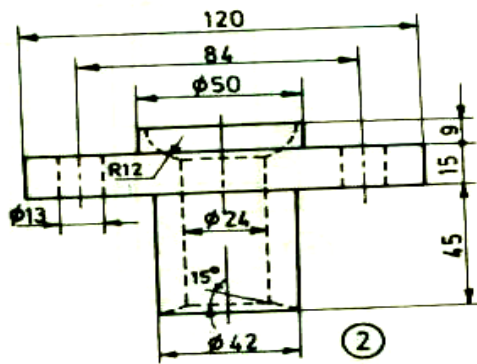
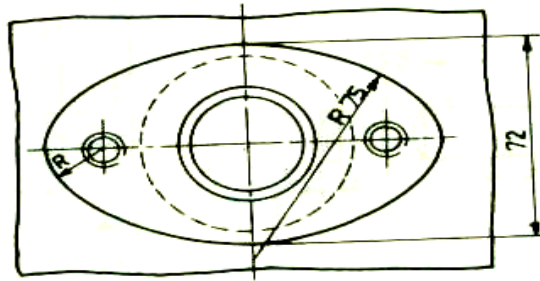
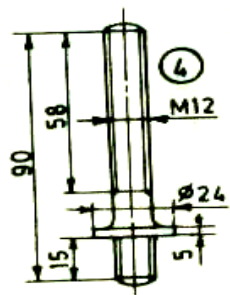
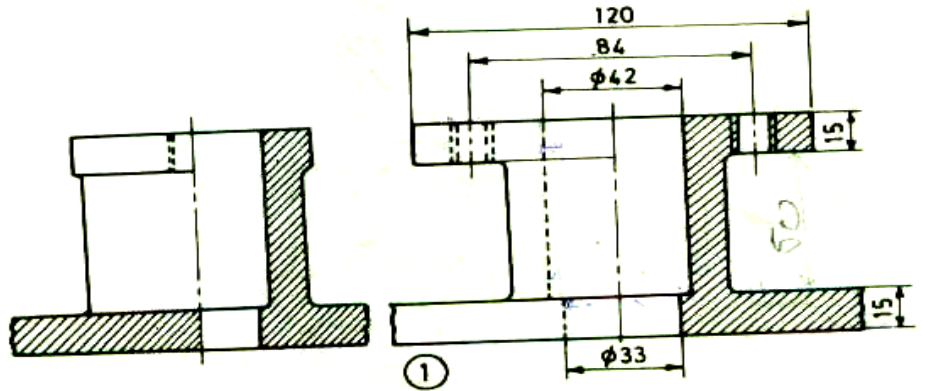
**PART-B**

**(45×1=45)**

2. Details of a stuffing box are shown in figure:

Assemble all parts and draw

- Half sectional front view with left half in section.
- Top view.
- Right side view.



Parts list

Part No.	Name	Matl	Qty
1	Body	CI	1
2	Gland	Brass	1
3	Bush	Brass	1
4	Stud	MS	2
5	Nut, M12	MS	2