

# Computer Algorithms in Systems Engineering

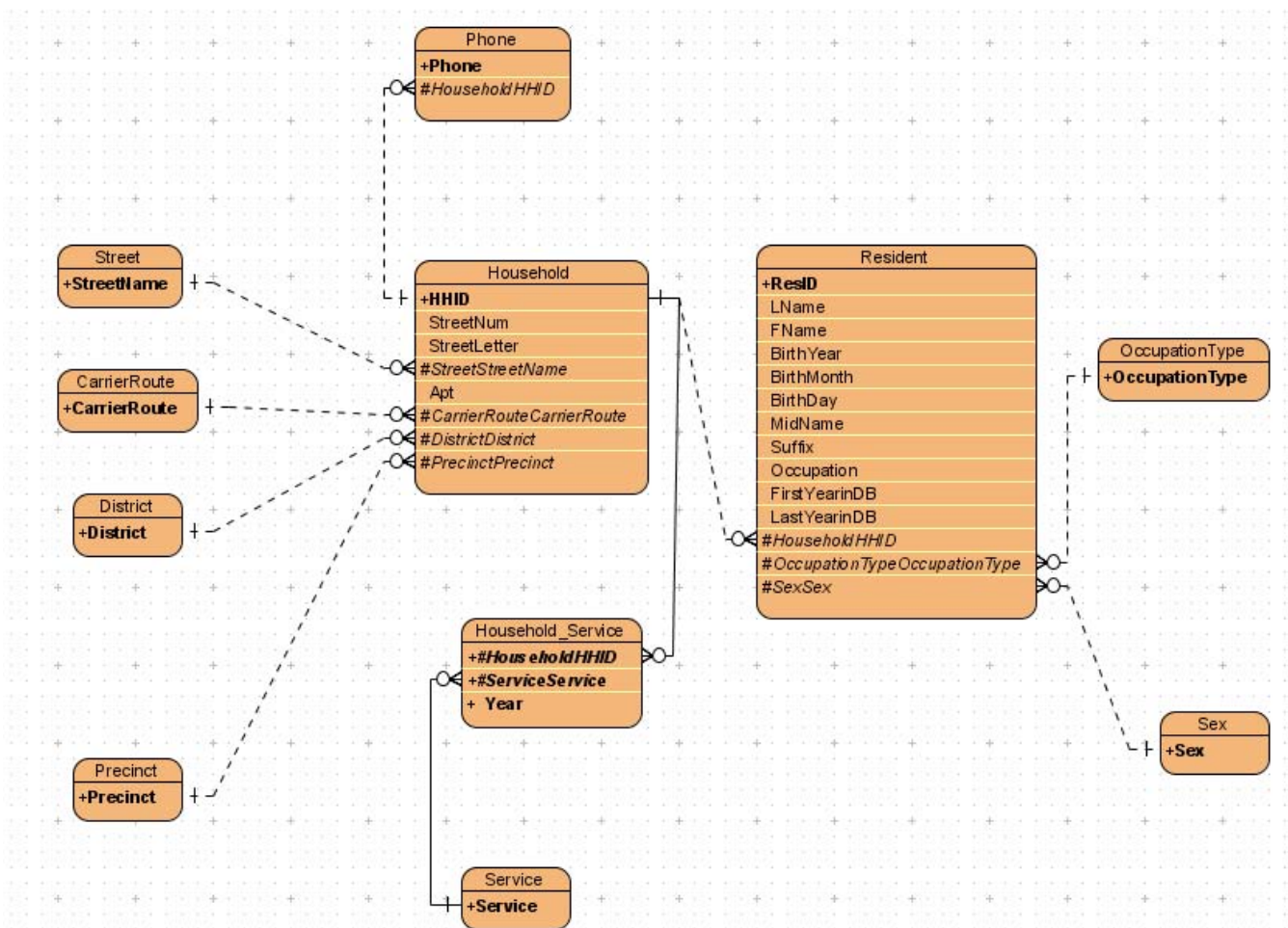
Spring 2010

## Problem Set 2: Municipal Database

Due: 12 noon, Wednesday, February 24, 2010

### 1. Problem statement

1. Build a fully normalized data model, using Visual Paradigm's entity-relationship (data) model diagram.



2. Implement your data model in MS SQL Server, with all the data included in the database except as noted below.

**See .sql file**

MIT OpenCourseWare  
<http://ocw.mit.edu>

1.204 Computer Algorithms in Systems Engineering  
Spring 2010

For information about citing these materials or our Terms of Use, visit: <http://ocw.mit.edu/terms>.